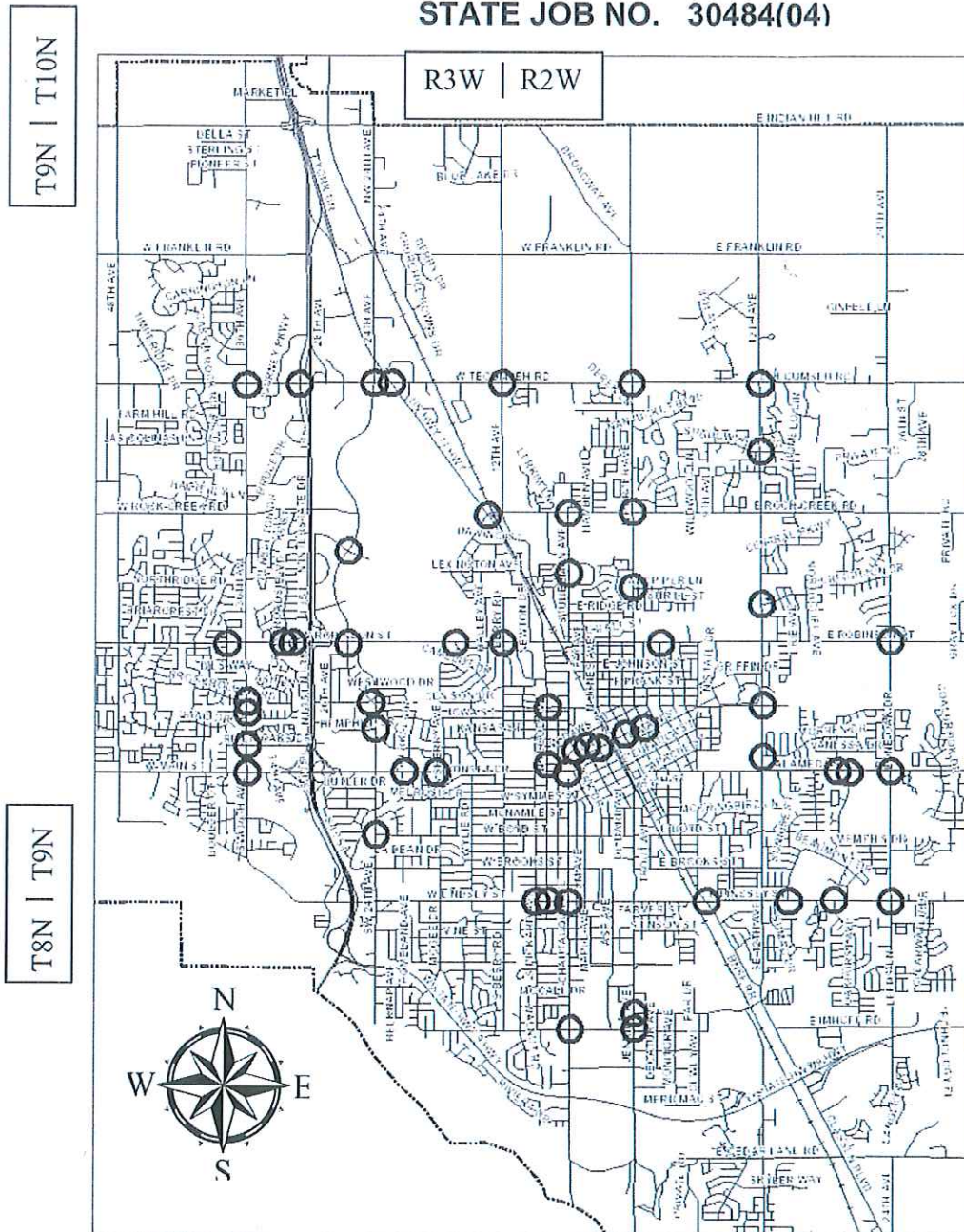


STATE OF OKLAHOMA
DEPARTMENT OF TRANSPORTATION

PLAN OF PROPOSED
TRAFFIC SIGNAL PEDESTRIAN PUSH BUTTON UPGRADES
AT VARIOUS INTERSECTIONS CITYWIDE

Federal Aid Project Number: STPG-214E(081)AG
CLEVELAND COUNTY
STATE JOB NO. 30484(04)



Approximate Center of Project

Latitude: 35°13'N
Longitude: 97°27'W

2009 OKLAHOMA STANDARD
SPECIFICATIONS FOR HIGHWAY
CONSTRUCTION ENGLISH GOVERN,
APPROVED BY THE U.S. DEPARTMENT OF
TRANSPORTATION, FEDERAL HIGHWAY
ADMINISTRATION, JANUARY 4, 2010

THIS PROJECT IS
LOCATED WITHIN THE
URBAN LIMITS OF THE
CITY OF NORMAN

INDEX OF SHEETS	
1	TITLE SHEET
2	GENERAL NOTES and SCOPES OF WORK
3	QUANTITIES BY INTERSECTION
4	LUMINAIRE QUANTITIES
5	MAST ARM SIGN DETAILS/PAY QUANTITIES
6-8	MAST ARM SIGNS

The following ODOT Standards will be required:

TCS1-1-01	TCS14-1-00
PBD1-1-00	SA1-1-02
HLD1-2-00	HLD2-2-00

David R. Riesland
David R. Riesland, P.E.
City of Norman
OKLA. REG. NO. 24187

CITY OF NORMAN OKLAHOMA
DATE APPROVED: 11/8/2016
BY [Signature]
TRANSPORTATION ENGINEER

CITY OF NORMAN OKLAHOMA
DATE APPROVED: 11/8/16
BY [Signature]
DIRECTOR OF PUBLIC WORKS

OKLAHOMA DEPARTMENT OF
TRANSPORTATION
DATE APPROVED: _____
BY _____
CHIEF ENGINEER

DEPARTMENT OF TRANSPORTATION
FEDERAL HIGHWAY ADMINISTRATION
DATE APPROVED: _____
BY _____
DIVISION ADMINISTRATOR

PEDESTRIAN PUSH BUTTON UPGRADES CITYWIDE Job Number: 30484(04)	Sheet No. 1 of 8
---	------------------------